



FOSHAN WELL PVC TARPAULIN

PVC TARPAULIN

PVC夹网布

Manufacturer direct sale, our quality, materials, the work is better and more practical among others competitors with the same price and specification.

厂家直销，同价格，同规格我们质量、用料、做工更好更踏实

产品特性 PRODUCT FEATURES

- It is waterproof and mildew proof
- 具有防水、防霉功能
- It has light weight, high tensile strength, acid and alkali resistance and high temperature resistance
- 具有材轻、抗拉强度高、耐酸碱、抗高温
- With large fracture and tear strength, tear elongation rate is high
- 断裂和撕破强力大、撕裂伸长率高
- Large breadth, can reduce the seam when processing the finished product, improve the quality
- 幅宽大,加工成品时能减少拼缝，提高品质

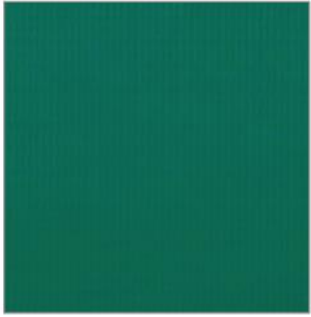


产品用途 PRODUCT USAGE

- It can be used as an outdoor tent or umbrella
- 可作户外帐篷或遮阳伞
- It can be made into air pipe
- 可做成风管
- It can be used for bags
- 可用于箱包
- It can be made cargo tarpaulin for automobiles, trains and ships
- 可用于汽车、火车、轮船的货运篷布
- It can be used for covering open-air warehouses or temporary granaries
- 可用作露天仓库或临时粮仓遮盖用
- It is the material for temporary shed and warehouse in various construction sites
- 可作各种工地搭建临时工棚、临时仓库的材料



ROYAL-BLUE



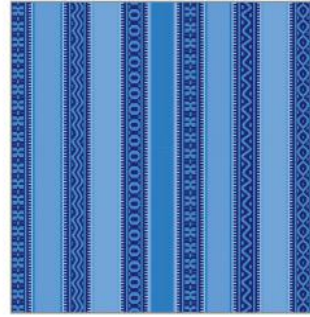
GREEN



MAROON



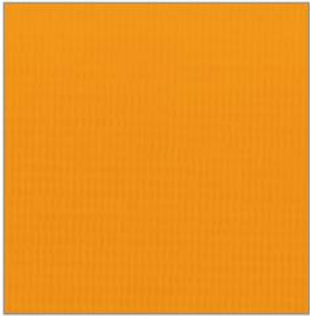
E-1352-2



E-1351-2



E-1351-3



ORANGE



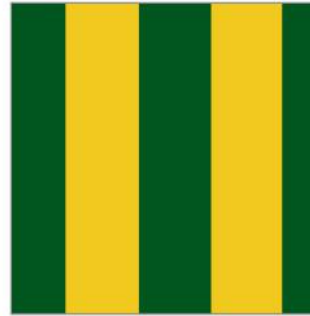
RED



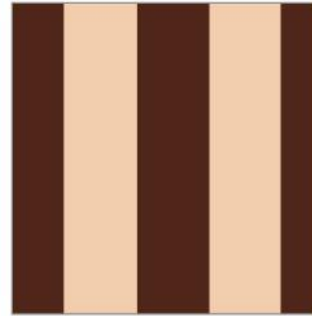
O-6074-1



E-1351-6



WLA-2



WLA-4



O-6074-2



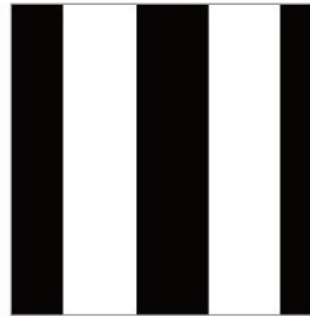
O-6074-3



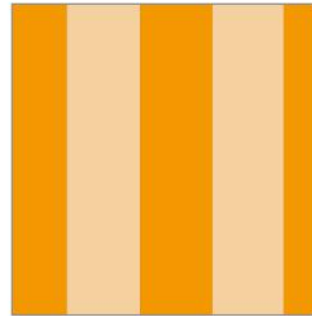
O-6074-4



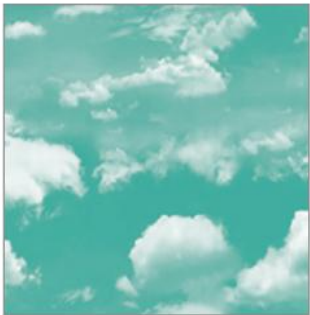
WLA-6



WLA-11



WLA-18



O-6074-5



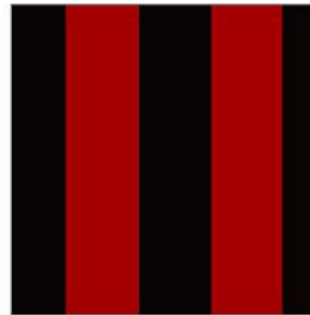
O-6126-1



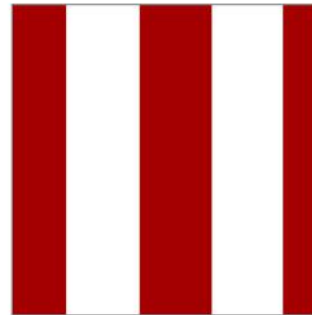
E-1352-1



WLA-21



WLA-23



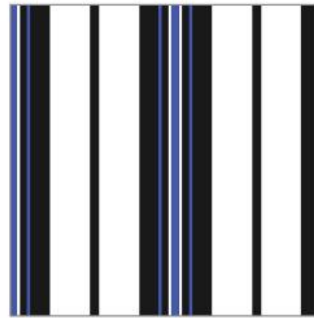
WLA-32



WLA-43



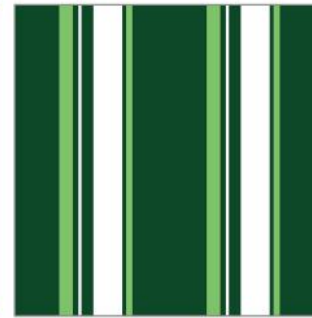
WLA-56



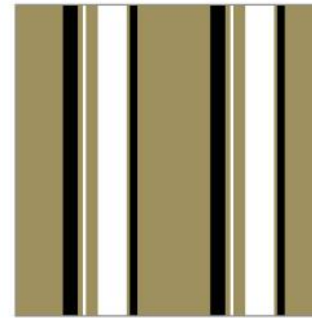
WLB-2



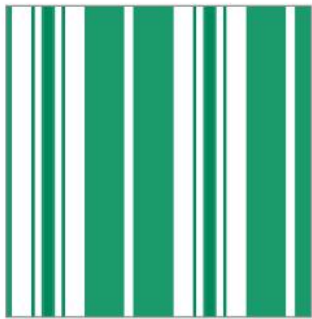
WLC-9



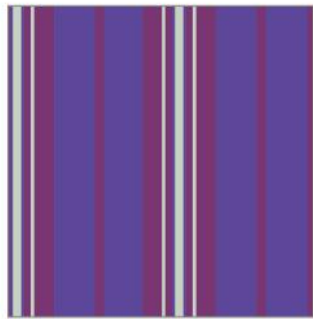
WLC-10



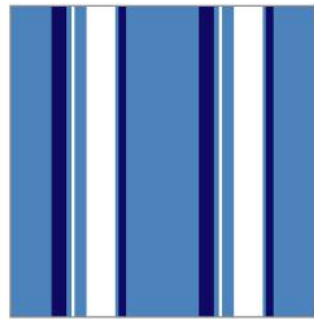
WLC-12



WLB-6



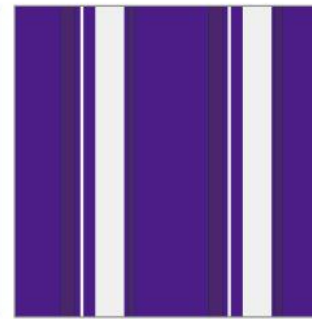
WLB-8



WLC-2



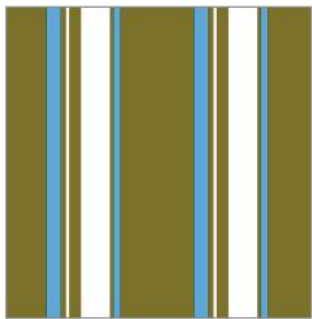
WLC-14



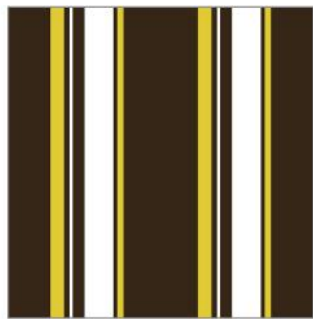
WLC-18



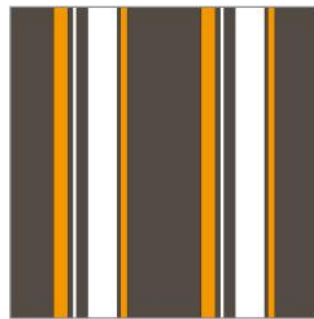
WLC-22



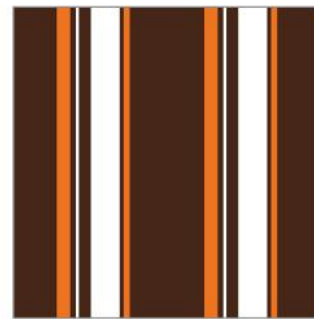
WLC-3



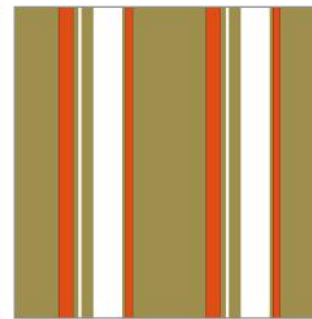
WLC-4



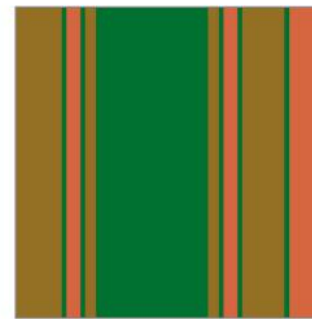
WLC-4A



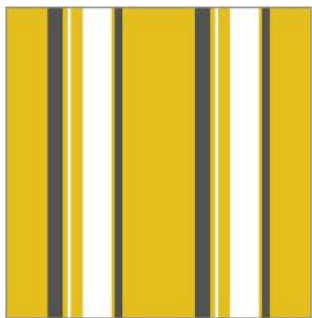
WLC-27



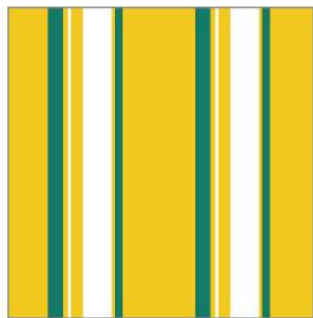
WLC-31



WLD-2



WLC-5



WLC-6



WLC-8



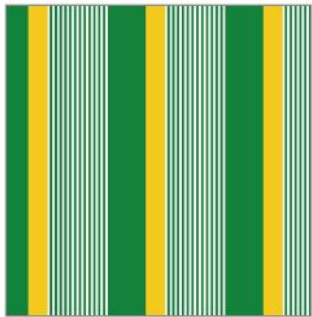
WLD-3



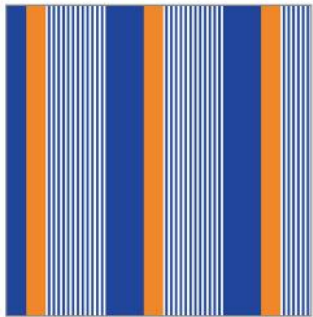
WLD-8



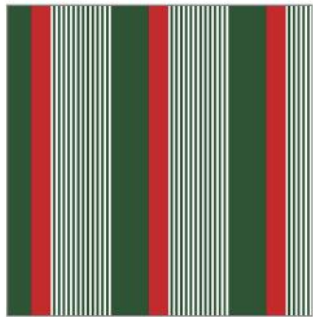
WLD-9



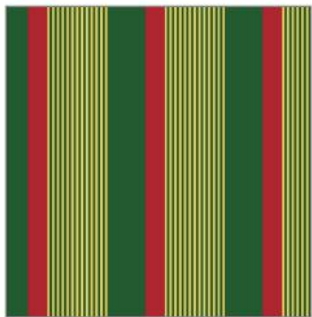
WLE-1



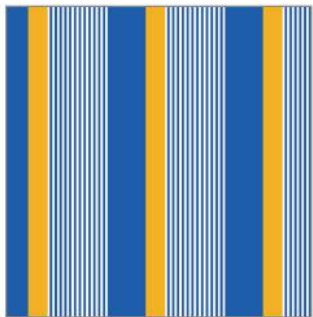
WLE-2



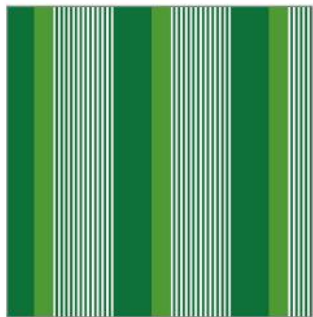
WLE-3



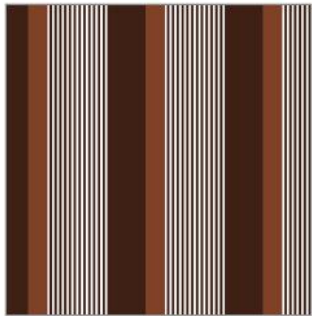
WLE-4



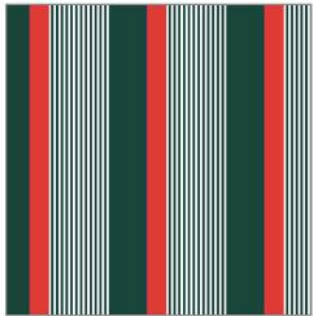
WLE-5



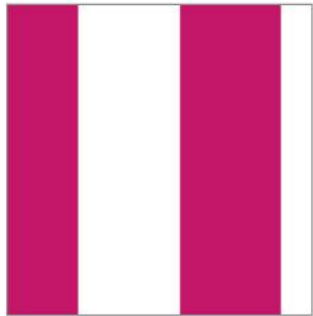
WLE-6



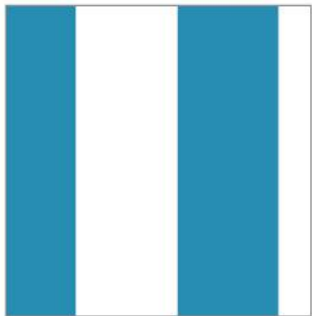
WLE-9



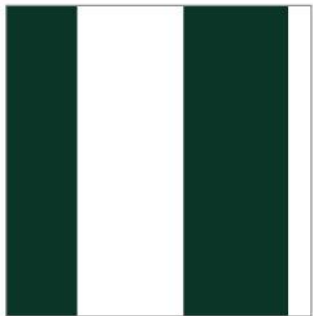
WLE-10



WLF-6



WLF-8



WLF-10



WLF-12



WLH-1



WLH-2



WLH-4



WLH-5



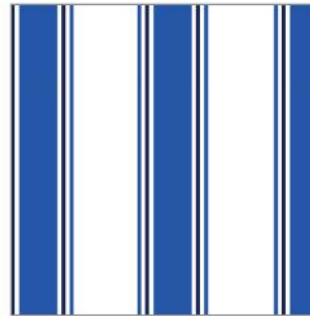
WLH-6



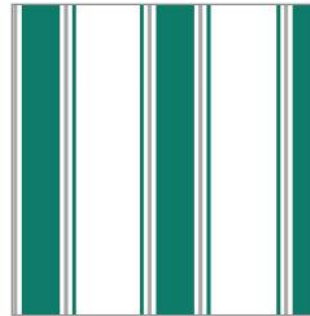
WLH-7



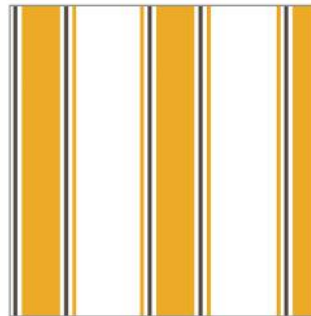
WLI-1



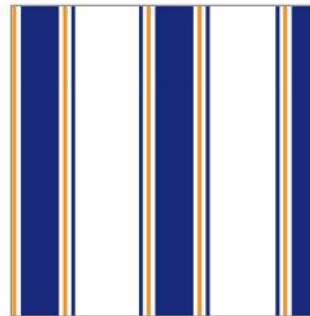
WLI-3



WLI-4



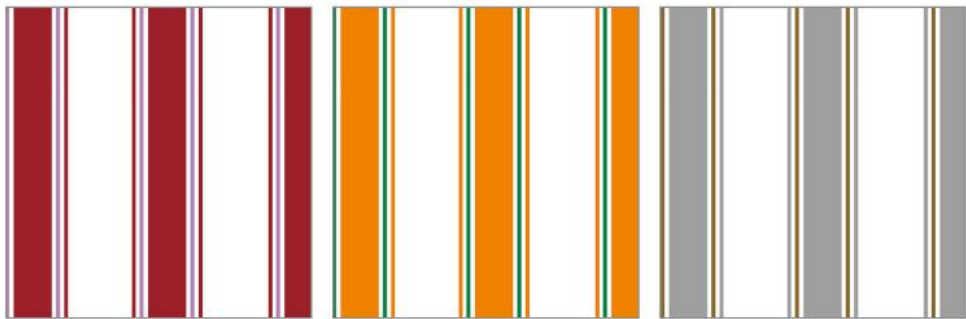
WLI-5A



WLI-8



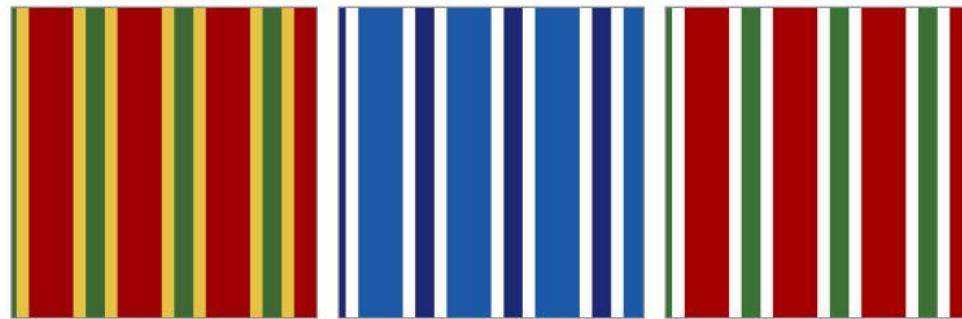
WLI-9



WLI-11

WLI-14

WLI-15



WLK-6

WLK-7

WLK-10



WLJ-1

WLJ-3

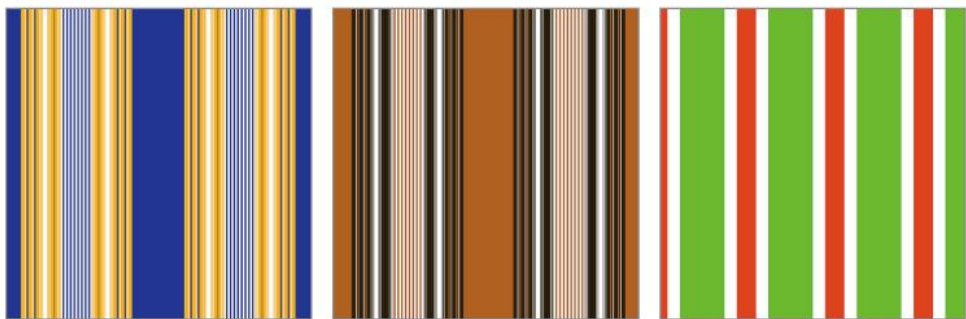
WLJ-4



WLK1-2

WLK1-8

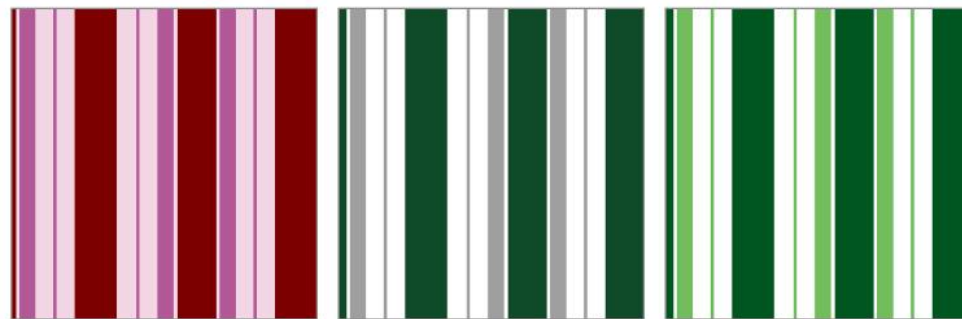
WLK1-9



WLJ-6

WLJ-7

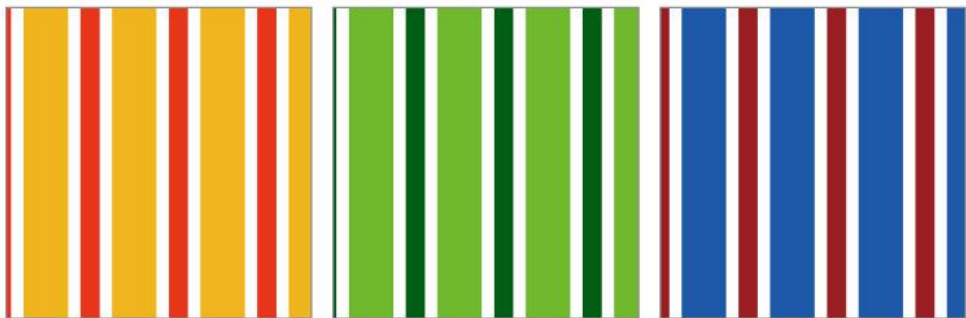
WLK-1



WLL-14

WLL-18

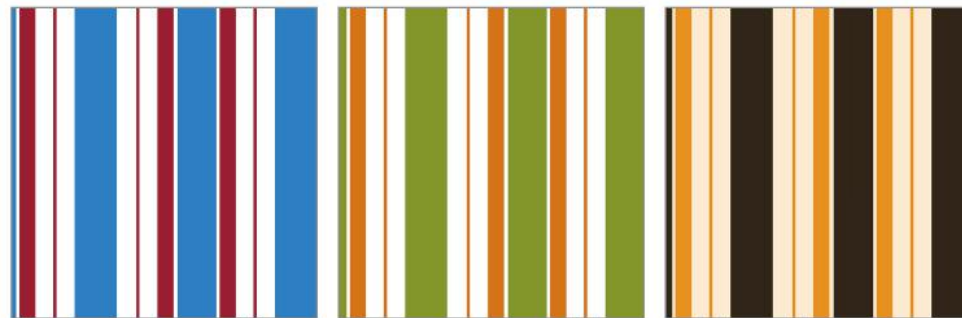
WLL-23



WLK-2

WLK-4

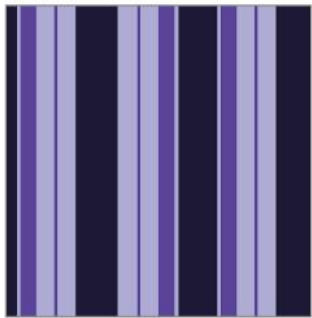
WLK-5



WLL-35

WLL-36

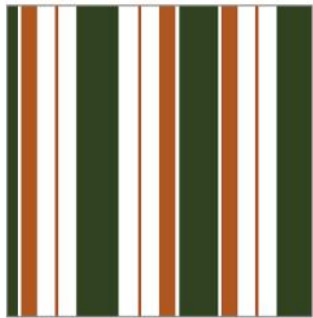
WLL-37



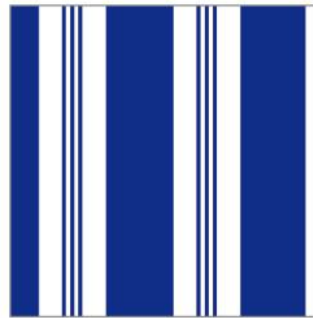
WLL-39



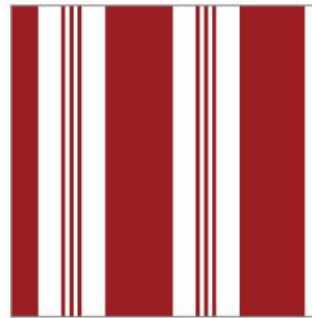
WLL-42



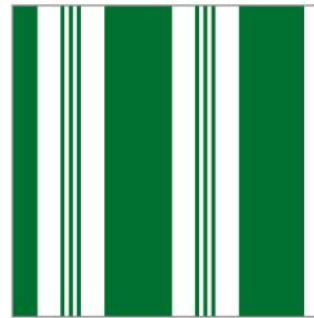
WLL-43



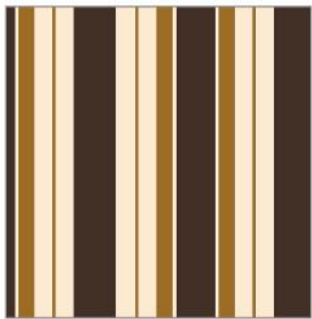
WLP-5



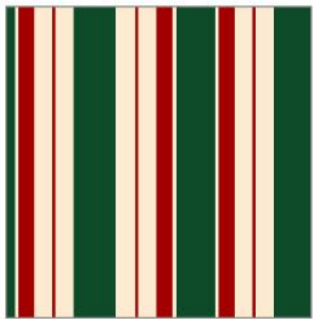
WLP-8



WLP-12



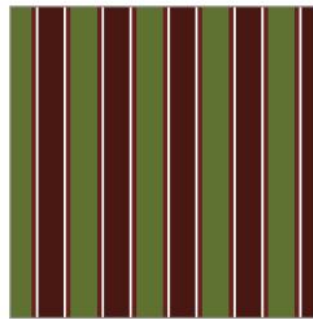
WLL-44



WLL-48



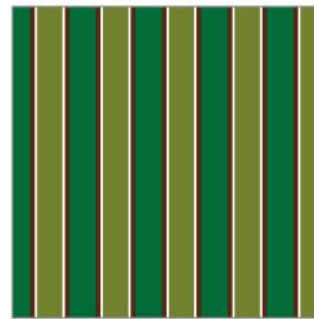
WLM-4



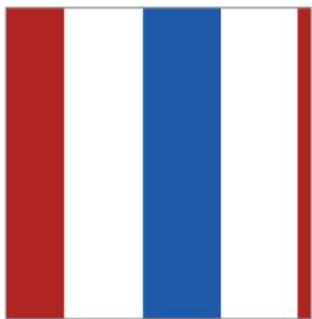
WLQ-1



WLQ-2



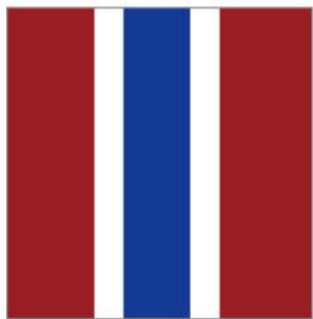
WLQ-4



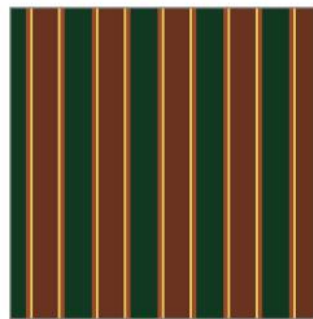
WLM-5



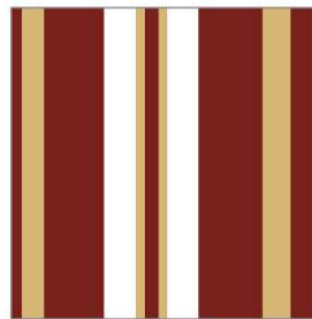
WLO-2



WLO-3



WLQ-7



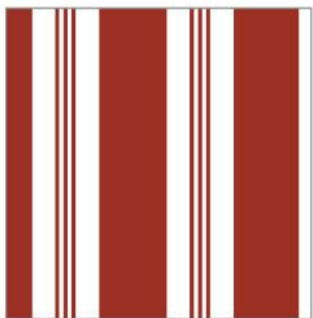
WLR-2



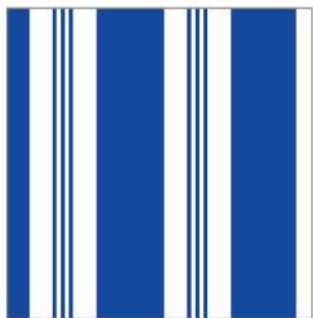
WLR-5



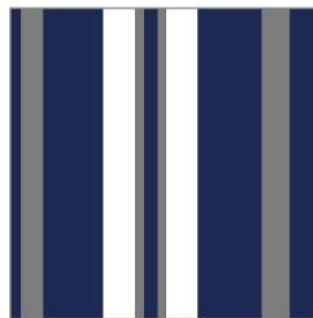
WLP-1



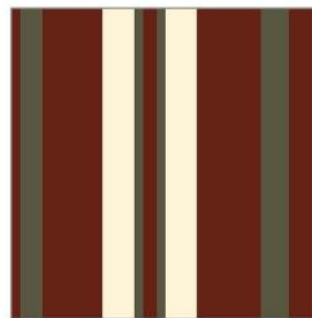
WLP-3



WLP-4



WLR-7



WLR-10



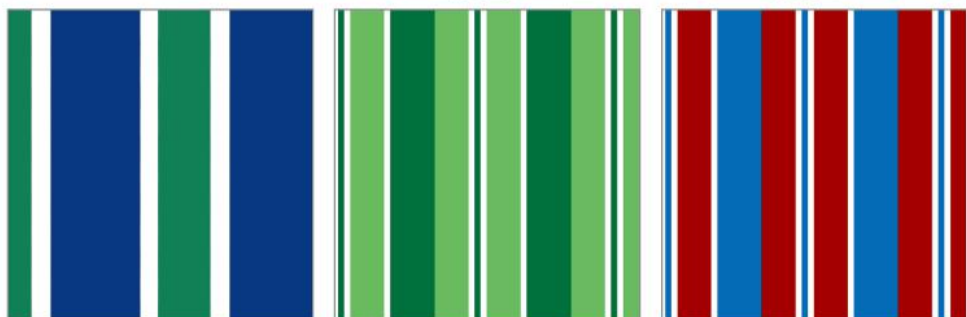
WLW-1



WLX-2

WLX-3

WLX-4



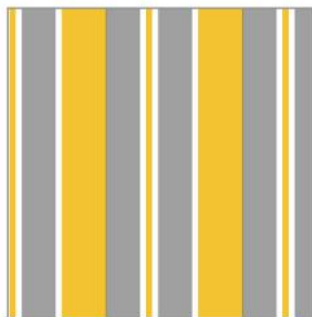
WLX-5

WLZ-1

WLZ-2



WLZ-3



WLZ-4



OPTIONAL EMBOSSING

可选纹路



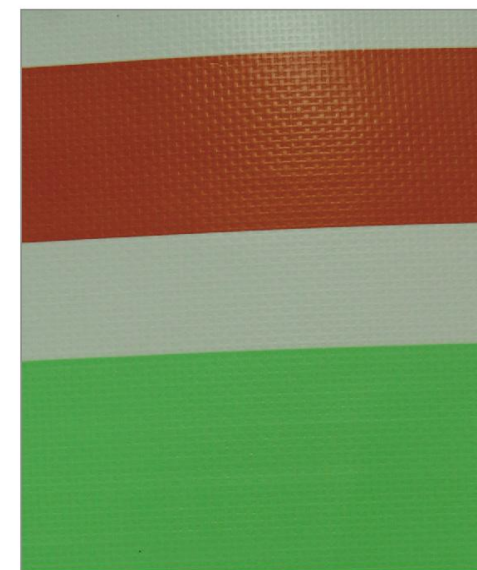
ZTY015(309+2纹)



ZTY023(HF风管光面)



ZTY024(磨砂纹)



ZTY025(TW纹)